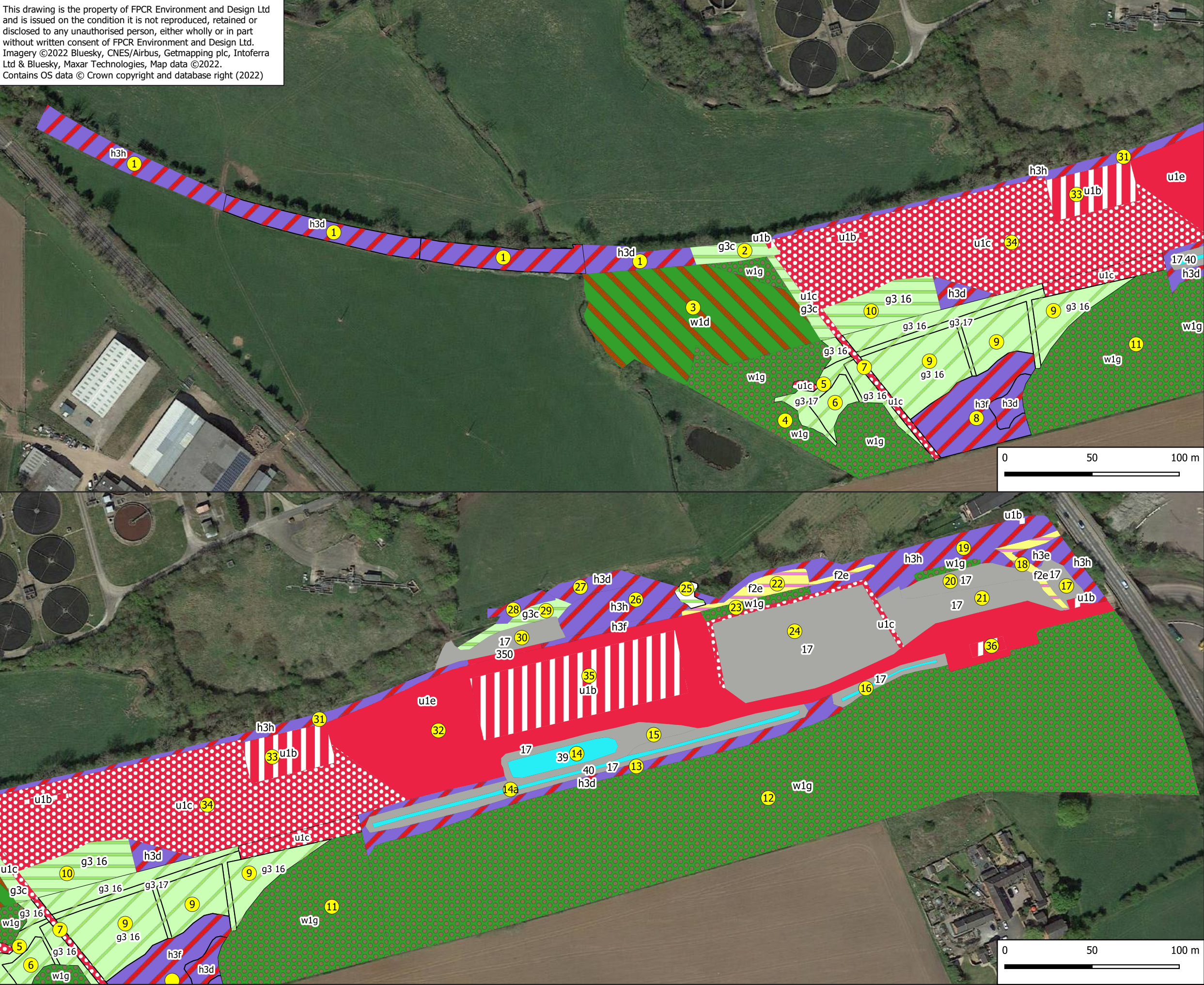


This drawing is the property of FPCR Environment and Design Ltd and is issued on the condition it is not reproduced, retained or disclosed to any unauthorised person, either wholly or in part without written consent of FPCR Environment and Design Ltd. Imagery ©2022 Bluesky, CNES/Airbus, Getmapping plc, Intoferra Ltd & Bluesky, Maxar Technologies, Map data ©2022. Contains OS data © Crown copyright and database right (2022)



Key

UKHab-Habitats

- Artificial unvegetated, unsealed surface
- Bramble scrub
- Built linear features
- Developed land; sealed surface
- Mixed scrub
- Other neutral grassland
- Other woodland; broadleaved
- Wetland
 - 39 - artificial man-made non-priority pond
 - 40 - culvert
 - 191 - ditch (dry)
- Ruderal/Ephemeral
- Wet woodland

- UKHab Codes
- 17 – Ruderal/ephemeral
 - 191 – Ditch (dry)
 - 39 – Artificial man-made non-priority pond
 - 40 – Culvert
 - f2e – Reedbeds
 - g1c – Bracken
 - g3 16 – Neutral grassland, tall herb
 - g3 17 – neutral grassland, ruderal/ephemeral
 - g3c – Other neutral grassland
 - h3d – Bramble scrub
 - h3e – Gorse scrub
 - h3f – Hawthorn scrub
 - h3h – Mixed scrub
 - u1b – Developed land; sealed surface
 - u1c – Artificial unvegetated, unsealed surface
 - u1e – Built linear features

-	23.02.22	Initial copy	NJL:/NJL
rev	date	comment	drm/chk



client
R&P Clean Power Limited

project
Swadlincote Resource Recovery Park (SRRP)

drawing title
HABITATS



drawing / figure number
7233-ES-8.3-01

Date printed
1/10/2022